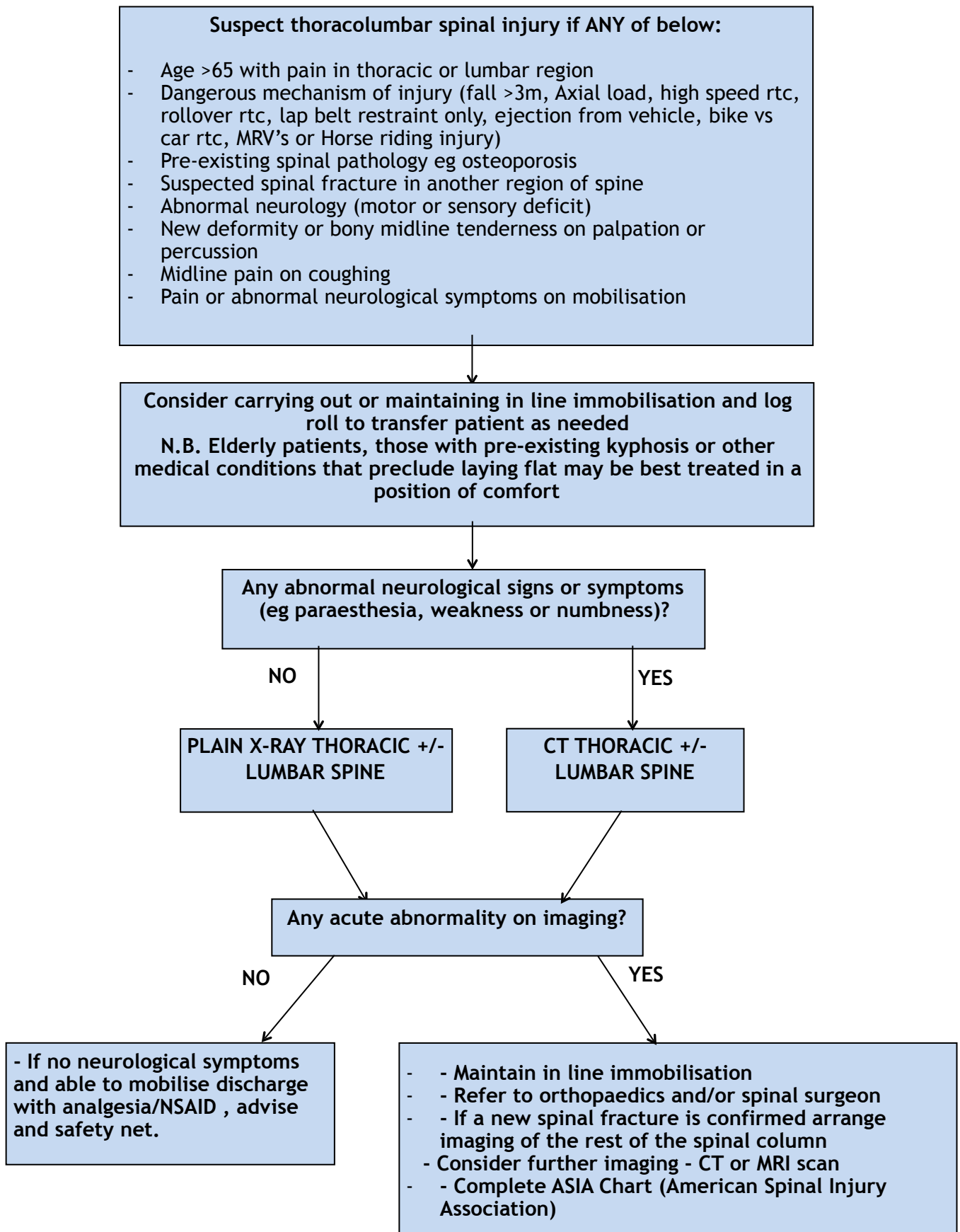


Suspected Thoracolumbar Spinal Injury Guideline (>16yrs)



Patient Name _____

Examiner Name _____

Date/Time of Exam _____



STANDARD NEUROLOGICAL CLASSIFICATION OF SPINAL CORD INJURY



MOTOR

KEY MUSCLES
(according to revision table)

	R	L
C5	<input type="checkbox"/>	<input type="checkbox"/>
C6	<input type="checkbox"/>	<input type="checkbox"/>
C7	<input type="checkbox"/>	<input type="checkbox"/>
C8	<input type="checkbox"/>	<input type="checkbox"/>
T1	<input type="checkbox"/>	<input type="checkbox"/>

UPPER LIMB TOTAL (25) + (25) = (50)

SENSORY

KEY SENSORY POINTS

0 = absent
1 = impaired
2 = normal
NT = not testable

	LIGHT TOUCH		PIN PRICK	
	R	L	R	L
C2				
C3				
C4				
C5				
C6				
C7				
C8				
T1				
T2				
T3				
T4				
T5				
T6				
T7				
T8				
T9				
T10				
T11				
T12				
L1				
L2				
L3				
L4				
L5				
S1				
S2				
S3				
S4-S5				

Comments:

LOWER LIMB TOTAL (25) + (25) = (50)

Voluntary anal contraction (Yes/No) ☐

COMPLETE OR INCOMPLETE?
Incomplete = Any sensory or motor function is spared

ASIA IMPAIRMENT SCALE ☐

ZONE OF PARTIAL PRESERVATION
Caudal extent of sensory impairment ☐

Any anal sensation (Yes/No) ☐

PIN PRICK SCORE (max 112)

LIGHT TOUCH SCORE (max 112)

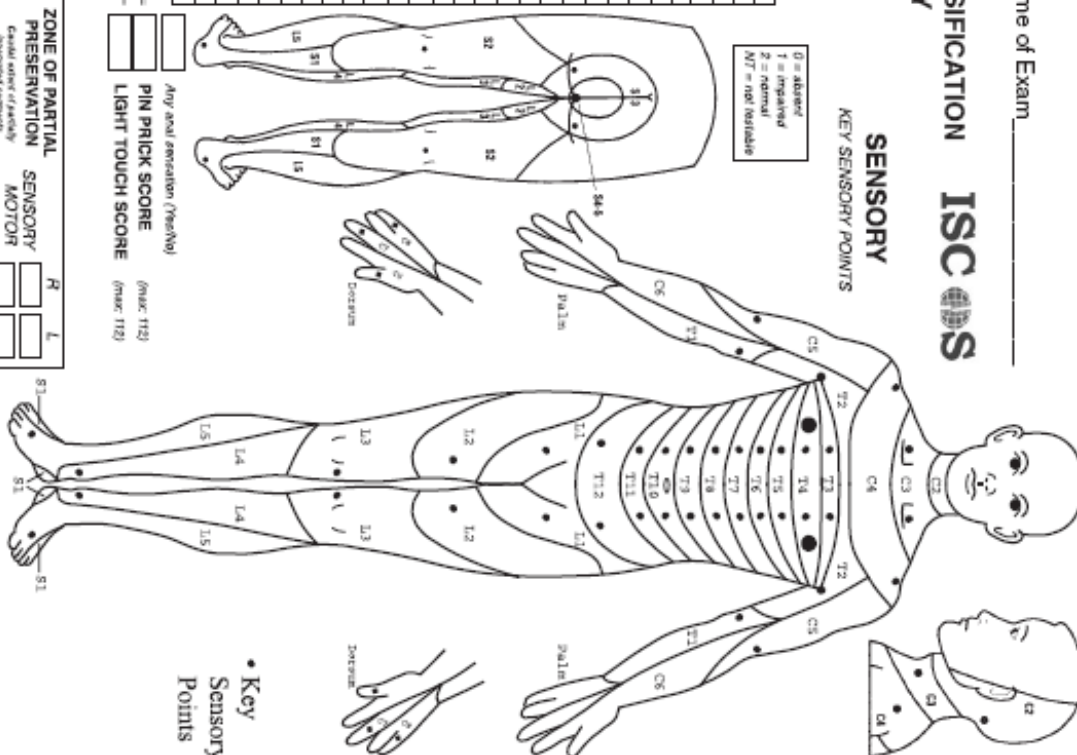
NEUROLOGICAL LEVEL ☐ + ☐ = ☐

SENSORY MOTOR ☐ ☐

ASIA IMPAIRMENT SCALE ☐

ZONE OF PARTIAL PRESERVATION ☐

SENSORY MOTOR ☐ ☐



• Key
Sensory
Points