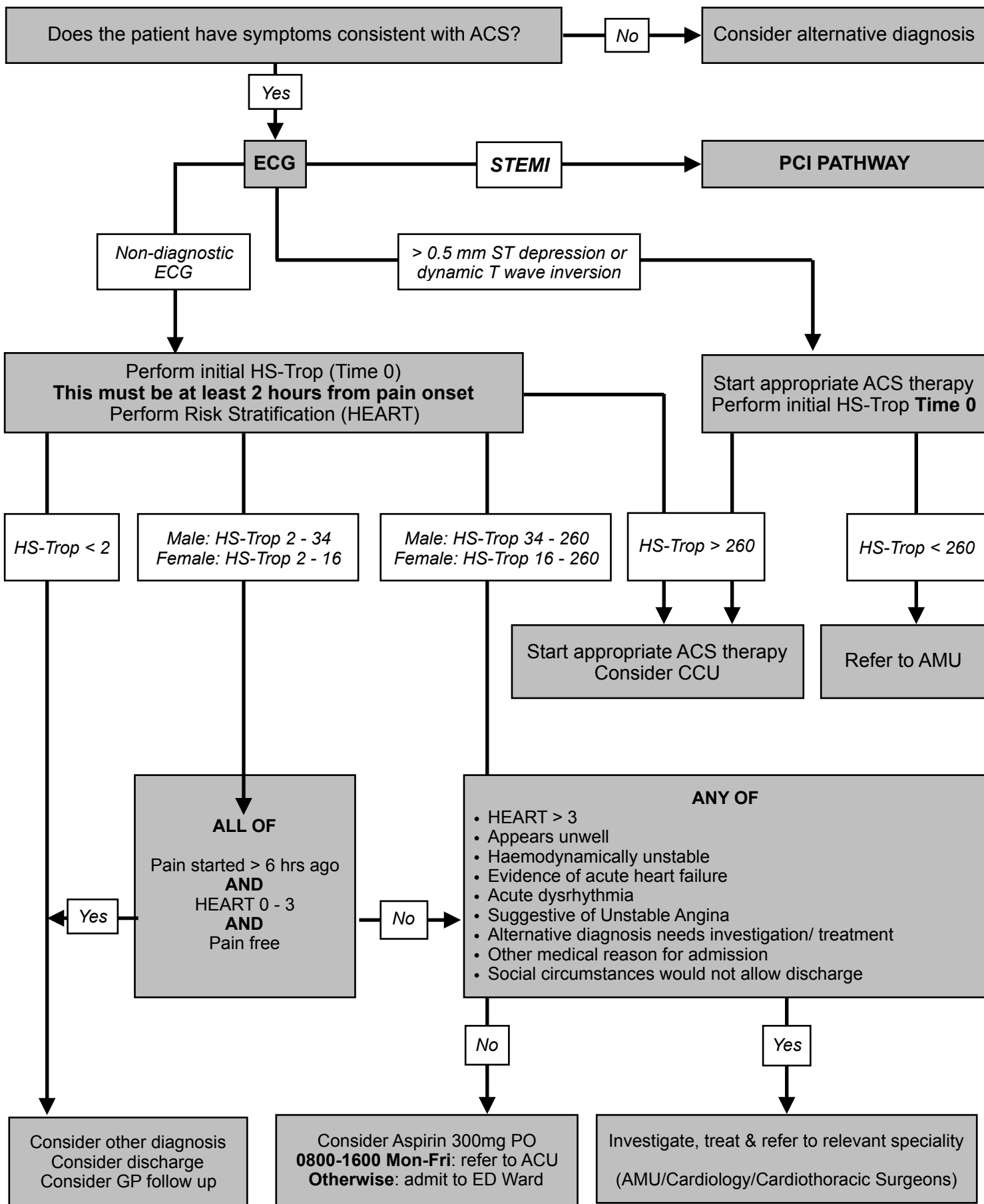


Cardiac Chest Pain Guideline Part 1 (Oldham)



HEART SCORE	Criteria	Points
History <u>Typical Symptoms</u> - central/left chest pain - radiation to arms/throat - sweating/clamminess <u>Atypical Symptoms</u> - no chest pain, right chest pain - radiation to back - worse on inspiration/palpation	Highly suspicious (Typical symptoms only)	2
	Moderately Suspicious (Both typical and atypical symptoms)	1
	Slightly Suspicious (Atypical symptoms only)	0
ECG	New ST segment deviation	2
	Old changes/ bundle branch block/ paced rhythm	1
	Normal/ non-specific T wave changes	0
Age	> 64 years old	2
	45 - 64 years old	1
	<45 years old	0
Risk Factors - Diabetes - Smoker within last 90 days - Hypertension - Hypercholestraemia - FH coronary artery disease	> 2 Risk Factors OR previous AMI/ CVA/ PVD	2
	1-2 Risk Factors	1
	No Risk Factors	0
Troponin	Male > 102/ Female > 48	2
	Male 34 -102/ Female 16 - 48	1
	Male < 34/ Female < 16	0
TOTAL		

0-3 points - 1.7% chance of MACE in next 6 weeks
4-6 points - 16.6% chance of MACE in next 6 weeks
7-10 points - 43.1 - 50.1% chance of MACE in next 6 weeks

**MACE = Major Adverse Cardiac Event
 (Death, AMI, CABG, PCI, coronary stenosis)***

* Backus BE et al. A prospective validation of the HEART score for chest pain patients at the emergency department. *International Journal of Cardiology* 168 (2013) 2153–2158

* Six AJ et al. The HEART Score for the Assessment of Patients With Chest Pain in the Emergency Department. A Multinational Validation Study. *Crit Pathways in Cardiol* 2013;12: 121–126

	Dose	Route	Notes
Aspirin	300mg	PO (chewed or dissolved in water)	Avoid if: -significant contra-indication (anaphylaxis, recent GI bleed) -if given prehospital (check ambulance sheets)
Clopidogrel	300mg	PO	If >1.5% risk of death at 6 months. (Use calculated GRACE score)* Avoid if: - significant contra-indication. - Any recent head trauma. Perform head CT first.
Clexane	1mg/kg	SC	Avoid if: - Significant contra-indication. - Already anticoagulated. - Any recent head trauma. Perform head CT first.

* National Institute for Health and Care Excellence (NICE). *Unstable Angina and NSTEMI: The early management of unstable angina and non-ST-elevation myocardial infarction*. 2010