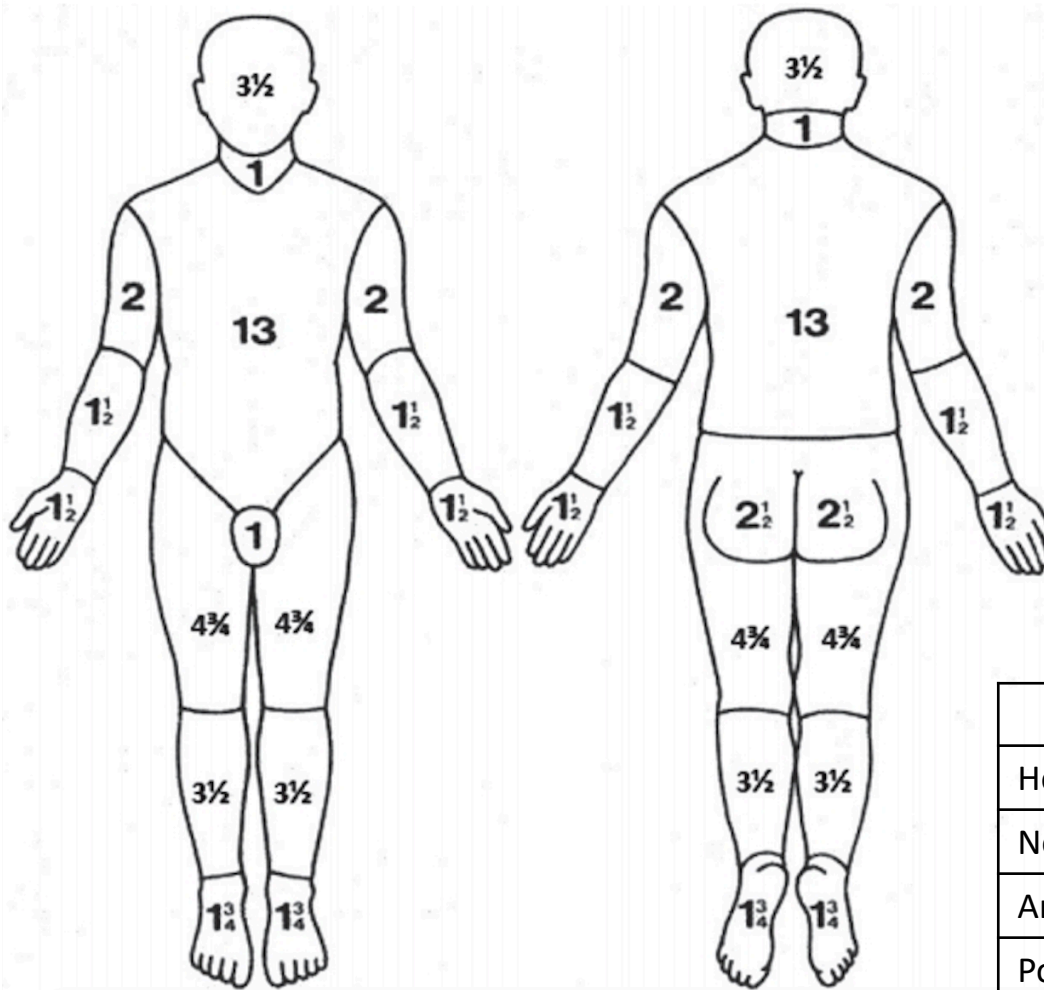


Be clear and accurate and **do not include erythema**



Area	Relative percentage Adult BSA
½ of head	3 ½
½ of one thigh	4 ¾
½ of one leg	3 ½

Location, size and extent of burn:

Wallace's Rule of 9s	Patient's palmar surface
For medium to large burns in adults	Includes fingers extended but closed together. Use as a guide for small or scattered burns. Pt palmar surface = 1% of TBSA
Arm 9%	
Head 9%	Anterior Trunk 18%
Neck 1%	Posterior Trunk 18%
Leg 18%	

Region	%
Head	
Neck	
Ant. Trunk	
Post. Trunk	
Right arm	
Left arm	
Buttocks	
Genitalia	
Right leg	
Left leg	
TOTAL BURN	

Refer: Burns ≥3% TBSA
Major burn: ≥15% TBSA\